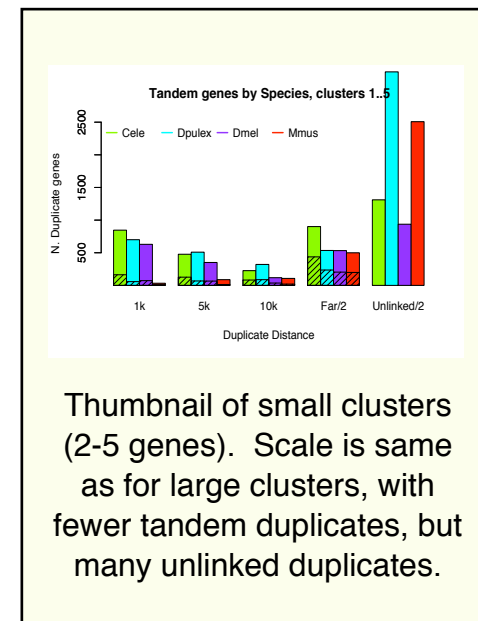
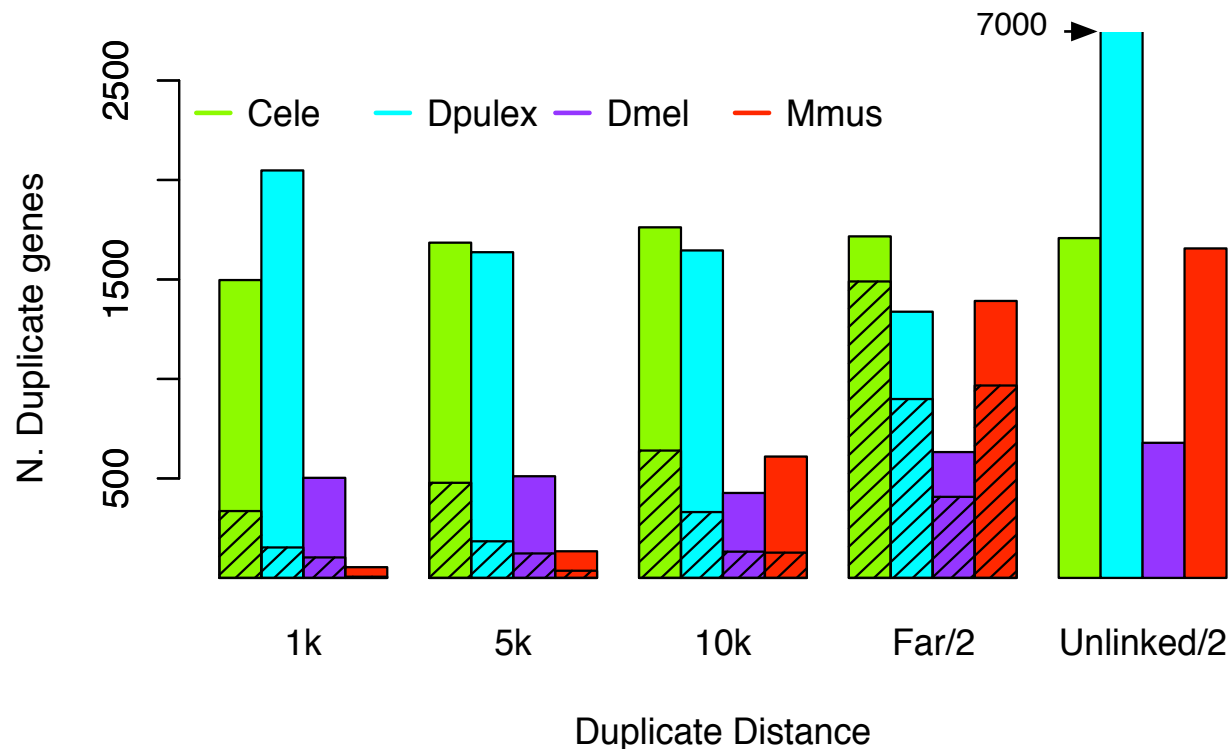


# Eukaryote gene duplicates by distance

## Large Clusters (10-80 genes)



Thumbnail of small clusters (2-5 genes). Scale is same as for large clusters, with fewer tandem duplicates, but many unlinked duplicates.

Inverted duplicate count is shown in **cross-hatch**. Note high % inverted genes in Far class; not applicable to Unlinked. Species order: *Cae. elegans* > *Daphnia pulex* > *Drosophila mel.* > *Mus mus*.

Distances 1k, 5k, 10k : Duplicates found within that kilobase distance from source gene.

Distance Far/2 : Duplicates > 20 kb on same scaffold or chromosome; 1/2 of duplicate count is shown.

Distance Unlinked/2: Duplicates on different scaffolds/chromosomes; 1/2 of count is shown.